



**International Journal
of
Applied Sciences
(IJAS)**

ISSN : 2180-1258

Volume 1, Issue 2

Number of issues per year: 6

International Journal of Applied Sciences (IJAS)

Volume 1, Issue 2, 2010

Edited By
Computer Science Journals
www.cscjournals.org

Editor in Chief Professor Rajab Chaloo

**International Journal of Applied Sciences
(IJAS)**

Book: 2010 Volume 1, Issue 2

Publishing Date: 20-12-2010

Proceedings

ISSN (Online): 2180-1258

This work is subjected to copyright. All rights are reserved whether the whole or part of the material is concerned, specifically the rights of translation, reprinting, re-use of illustrations, recitation, broadcasting, reproduction on microfilms or in any other way, and storage in data banks. Duplication of this publication of parts thereof is permitted only under the provision of the copyright law 1965, in its current version, and permission of use must always be obtained from CSC Publishers. Violations are liable to prosecution under the copyright law.

IJAS Journal is a part of CSC Publishers

<http://www.cscjournals.org>

© IJAS Journal

Published in Malaysia

Typesetting: Camera-ready by author, data conversion by CSC Publishing Services – CSC Journals, Malaysia

CSC Publishers

Editorial Preface

This is second issue of volume one of the International Journal of Applied Sciences (IJAS). IJAS is an International refereed journal for publication of current research in applied sciences. IJAS publishes research papers dealing primarily with the research aspects of Applied Sciences in general. Publications of IJAS are beneficial for researchers, academics, scholars, advanced students, practitioners, and those seeking an update on current experience, state of the art research theories and future prospects in relation to applied science. Some important topics covers by IJAS are agriculture, architectural, audio, automotive, military ammunition, military technology, military etc.

This journal publishes new dissertations and state of the art research to target its readership that not only includes researchers, industrialists and scientist but also advanced students and practitioners. IJAS seeks to promote and disseminate knowledge in the applied sciences, natural and social sciences industrial research materials science and technology, energy technology and society including impacts on the environment, climate, security, and economy, environmental sciences, physics of the games, creativity and new product development, professional ethics, hydrology and water resources, wind energy.

IJAS editors understand that how much it is important for authors and researchers to have their work published with a minimum delay after submission of their papers. They also strongly believe that the direct communication between the editors and authors are important for the welfare, quality and wellbeing of the Journal and its readers. Therefore, all activities from paper submission to paper publication are controlled through electronic systems that include electronic submission, editorial panel and review system that ensures rapid decision with least delays in the publication processes.

To build its international reputation, we are disseminating the publication information through Google Books, Google Scholar, Directory of Open Access Journals (DOAJ), Open J Gate, ScientificCommons, Docstoc, Scribd, CiteSeerX and many more. Our International Editors are working on establishing ISI listing and a good impact factor for IJAS. We would like to remind you that the success of our journal depends directly on the number of quality articles submitted for review. Accordingly, we would like to request your participation by submitting quality manuscripts for review and encouraging your colleagues to submit quality manuscripts for review. One of the great benefits we can provide to our prospective authors is the mentoring nature of our review process. IJAS provides authors with high quality, helpful reviews that are shaped to assist authors in improving their manuscripts.

Editorial Board Members

International Journal of Applied Sciences (IJAS)

Editorial Board

Editor-in-Chief (EiC)

Professor. Rajab Chaloo

Texas A&M University (United States of America)

Associate Editors (AEiCs)

Dr. Nikolaos Kourkoumelis

University of Ioannina (Greece)

Editorial Board Members (EBMs)

Dr. Sullip Kumar Majhi

Indian Council of Agricultural Research (India)

Dr. Srung Smanmoo

National Center for Genetic Engineering and Biotechnology (Thailand)

Table of Content

Volume 1, Issue 2, December 2010

Pages

- 16-22 Optimal Transmission Conditions for Thin Adhesive Layer Based on Colonial Competitive Algorithm
Hamid Mozafari, Andreas Öchsner, Amran Ayob
- 23-29 On the Analysis of the Laminar to Turbulent Flow Patterns in the Treatment of a Patient Receiving Oxygen
Navarun Gupta, Lawrence Hmurcik, Manan Joshi, Bhushan Dharmadhikari

Optimal Transmission Conditions for Thin Adhesive Layer Based on Colonial Competitive Algorithm

Hamid Mozafari

*Faculty of Mechanical Engineering
Universiti Teknologi Malaysia
81310 UTM, Skudai, Johor, Malaysia*

mozafari.h@gmail.com

Behzad Abdi

*Faculty of Mechanical Engineering
Universiti Teknologi Malaysia
81310 UTM, Skudai, Johor, Malaysia*

behzad.abdi@gmail.com

Amran Ayob

*Faculty of Mechanical Engineering
Universiti Teknologi Malaysia
81310 UTM, Skudai, Johor, Malaysia*

amran@fkm.utm.my

Abstract

In this paper a novel evolutionary global search strategy called Colonial Competitive Algorithm (CCA) is utilized to determine an optimal imperfect transmission condition for a thin intermediate layer between two bonded materials in a dissimilar strip with a temperature-dependent source or sink formulation. The recently introduced CCA has proven its excellent capabilities such as faster convergence and better global optimum achievement. When finally compared with finite element analysis, the CCA shows excellent prospect in the design of adhesive joints.

Keywords: Colonial competitive algorithm (CCA), Adhesive Layer, finite element analysis, Transmission condition.

1. INTRODUCTION

Adhesive joints have found applications in many areas such as aerospace, aeronautics, electronics, constructions, sports and packaging [1]. Various imperfect transmission conditions for thin reactive heat-conducting adhesive layers were investigated by [2, 3, 4, 5, 6, 7].

Global optimization is an inherent problem in science and engineering. Many evolutionary algorithms [8, 9] have been proposed for solving the global optimization problems.

Colonial competitive algorithm is a new optimization algorithm that was recently introduced for solving various optimization problems. CCA is a universal search strategy that uses the sociopolitical competition among empires as a source of development inspiration [10]. CCA has been applied successfully in different domains, namely, design of controllers [11-12], recommender systems, characterization of elasto-plastic properties of materials [13] and many other optimization problems [14-15]. When compared to other optimization approaches, the results have shown good performance in both convergence rate and better global optima achievement.

The purpose of this paper is to obtain optimization of transmission conditions for a reactive thin adhesive layer in a hybrid model structure (see Fig. 1) by using the CCA. In this study the transmission condition is linear from the source to the intermediate layer.

2. PROBLEM FORMULATION

Consider a plane problem domain with a thin adhesive layer between two different materials (Fig. 1).

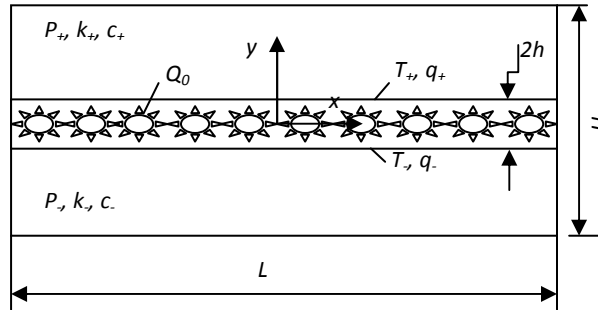


FIGURE 1: Specimen problem for heat conduction

The function ψ can be expressed as:

$$\psi(q_-, T) = \int_{T_-}^T \frac{dz}{\sqrt{1 - \phi(z) / q_-^2}} \quad (1)$$

Where ϕ is introduced as:

$$\phi(T) = 2k \int_{T_-}^T Q(z) dz \quad (2)$$

The above relation can be written in the intermediate layer in equivalent forms by adding and subtracting each other as:

$$k\psi(q_-, T_+) - 2k\psi(q_-, T) = 2q_- \cdot h \quad (3)$$

Where q is the y -component of heat flux and T is temperature and Q is the heat source of the specimen which exhibits temperature-dependent source and sink. The form of the source is:

$$Q = Q_0 \cdot T \quad (4)$$

This problem refers to a steady-state solution where boundary conditions material properties are chosen. As shown in a previous paper [7] in the case of a linear temperature dependency, the first transmission condition (1st TC) can be obtained as:

$$q_+^2(x, +h) - q_-^2(x, -h) = -kQ_0(T_+^2(x, +h) - T_-^2(x, -h)) \quad (5)$$

The second transmission condition (2nd TC) has also been shown for the case of source ($Q_0 > 0$) as:

$$\arcsin \frac{T_+ \sqrt{kQ_0}}{\sqrt{q_+^2 + kQ_0 T_+^2}} - \arcsin \frac{T_- \sqrt{kQ_0}}{\sqrt{q_-^2 + kQ_0 T_-^2}} = -2h \sqrt{\frac{Q_0}{k}} \cdot \text{sign}(q_-) \quad (6)$$

The second transmission condition for the cases $Q_0 > 0$ can be rewritten in the following as

$$\arcsin \frac{T_+ \sqrt{kQ_0}}{\sqrt{q_-^2 + kQ_0 T_-^2}} - \arcsin \frac{T_- \sqrt{kQ_0}}{\sqrt{q_-^2 + kQ_0 T_-^2}} = \pi + 2h \sqrt{\frac{Q_0}{k}} \cdot \text{sign}(q_-) \quad (7)$$

The second transmission condition of Eq. (1), in the case $Q_0 < 0$, can be written in the following form:

$$\psi(q_-, T) = \frac{|q_-|}{\sqrt{-kQ_0}} \log \left| \frac{T\sqrt{-kQ_0} + \sqrt{(T_-^2 - T^2)kQ_0 + q_-^2}}{T_- \sqrt{-kQ_0} + |q_-|} \right|. \quad (8)$$

Then, second transmission condition of Eq. (7) can be written in the form:

$$\ln \frac{(|q_+| + T_+ \sqrt{-kQ_0})(|q_-| + T_- \sqrt{-kQ_0})}{|kQ_0 T_-^2 + q_-^2|} = 2h \sqrt{\frac{-Q_0}{k}} \operatorname{sgn}(q_-), \quad (9)$$

3. FINITE ELEMENT MODELING

In this section stepping the FEM is engaged to validate the optimization results. The commercial finite element code MSC-Marc is used for the simulation of thermal behavior a thin interphase layer located between two adherents. Both adherents use constant material properties for all simulations; these are constant conductivity $k_{\pm} = 237 \text{ w/(m.k)}$ at 300°K , mass density $\rho_{\pm} = 2598.8 \text{ kg/m}^3$ and specific heat $c_{\pm} = 898.2 \text{ J/(kg.K}^\circ)$. The thin interphase layer is assumed to be made of an epoxy resin ($\tilde{k} = 0.2 \text{ w/(m.k)}$, $\rho = 1200 \text{ kg/m}^3$, $c = 790 \text{ J/(kg.K}^\circ)$) and exhibits different values of the linear temperature dependence of the source. In the simulations, the interphase layer has thickness $2h = h/100 = 0.01 \text{ m}$ and $L = 10 \text{ m}$.

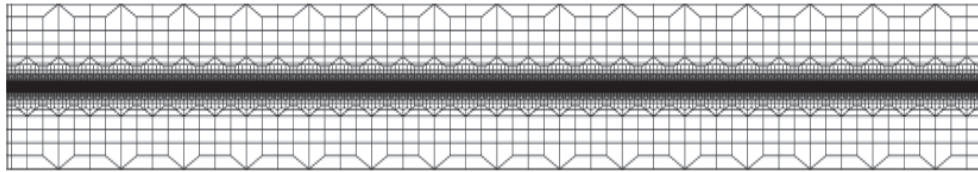


FIGURE 2: Two-dimensional finite element mesh

The 2D finite element mesh is built up of four-node (see fig. 2), isoperimetric elements with bilinear interpolation functions. The source or sink formulation is implemented by means of a special user subroutine written in FORTRAN. The application of this program requires a transient solution in order to incorporate the source expression.

4. COLONIAL COMPETITIVE ALGORITHM

Colonial competitive algorithm (CCA) is a new evolutionary optimization method which is inspired by the imperialistic competition algorithm. Like other evolutionary algorithms, it starts with an initial population, called country, which consists of colonies and imperialists. The imperialistic competition among these empires forms the proposed evolutionary algorithm. Imperialistic competition converges to a state in which there exists only one empire and colony have the same cost function value as the imperialist.

The total power of empires depends on both the power of the imperialist country and the power of its colonies which is:

$$C.C_n = \text{cost function (imperialist } n) + \zeta \text{ mean \{cost (colonies of empires } n)\}} \quad (10)$$

This competition gradually brings about a decrease in the power of weaker empires and an increase in the power of more powerful ones. This is modeled by just picking some of the weakest colonies of the

weakest empires and making a competition among all empires to possess these colonies. Figure 3 is a flowchart of the colonial competitive algorithm (CCA).

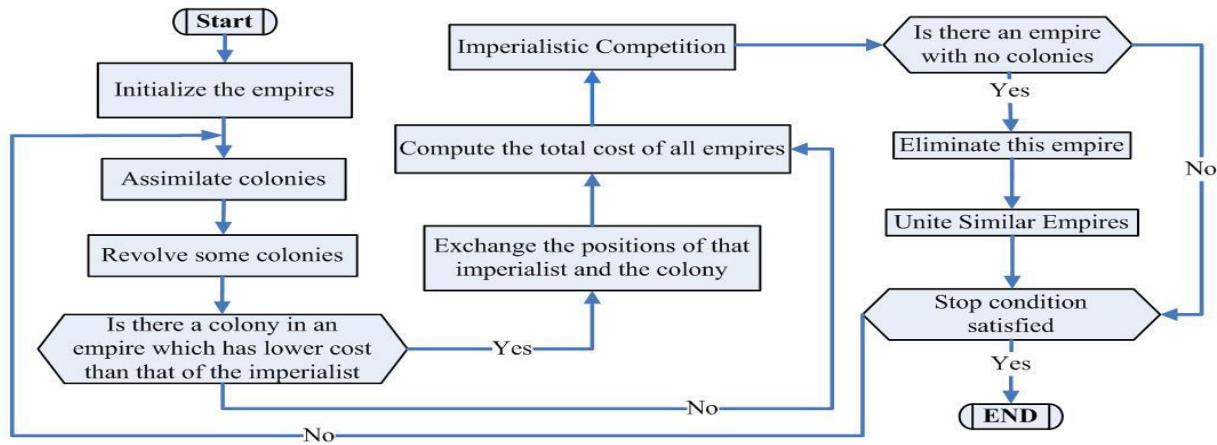


FIGURE3: Illustration of imperialist of competitive algorithm (CCA)

In application the CCA has been used in designing PID controller [16], achieving Nash equilibrium point [17], characterizing materials properties, beam forming, design of vehicle fuzzy controller, and others. In this paper, this algorithm is applied for optimizing the imperfect transmission conditions for thin interphases.

To obtain optimal design, considering both source factor and efficiency, the objective function is defined as follows [12].

$$J_{\tau} = (x_1, \dots, x_n) = \eta(x_1, \dots, x_n)^{\lambda_1} \cdot \phi(x_1, \dots, x_n)^{\lambda_2} \quad (11)$$

Where λ_1 , λ_2 are constant and x_1, \dots, x_n are design variables. When efficiency is more important than power factor, $\lambda_1 = 1$, $\lambda_2 = 0$ are selected. When source factor is more important $\lambda_1 = 0$, $\lambda_2 = 1$ are selected. By considering $\lambda_1 = \lambda_2 = 1$ both efficiency and source factor will be optimize simultaneously.

In this optimization problem the goal function is the inverse of Equation (11). The optimization variables are the upper and lower components of heat flux on the interface (q_+, q_-) and the upper and lower temperatures on the interface (T_+, T_-).

5. RESULTS AND DISCUSSION

All numerical simulations are carried out for the similar aluminum adherents and epoxy resin interphase layer. The boundary conditions are taken as a uniform temperature at the top (180°K to 540°K at $y = +H/2$) and the bottom surface (145°K to 435°K at $y = -H/2$). The source exhibits linear temperature dependence (see Fig. 1). Figures 4 and 5 are shown the temperature and heat flux distributions at the interface, i.e. $y = \pm h$, along the x -line obtained by finite element analysis for the case of linear positive and negative heat sources.

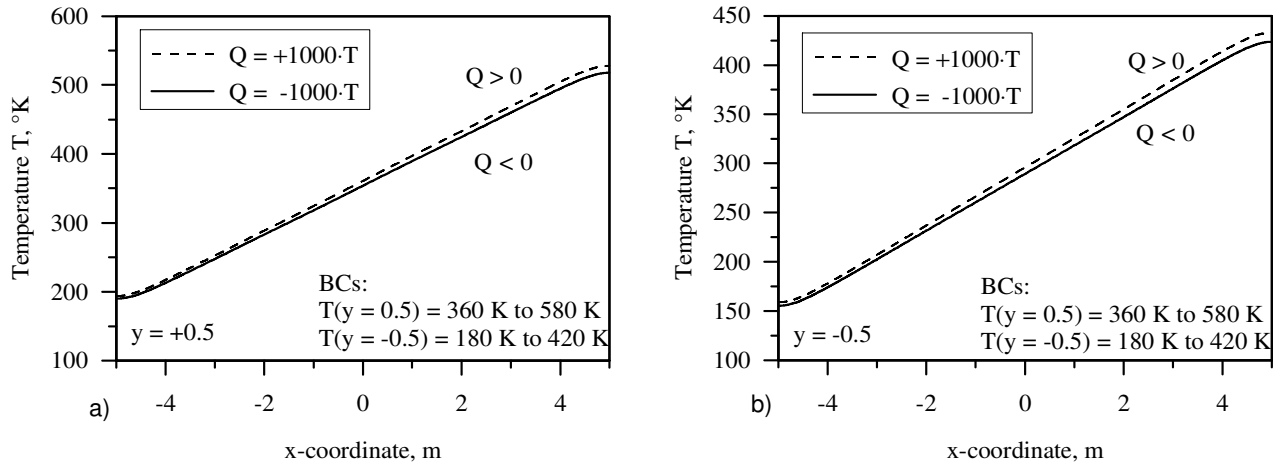


FIGURE 4: Temperature distribution on a) the upper interface b) the lower interface in a linear source - FEM

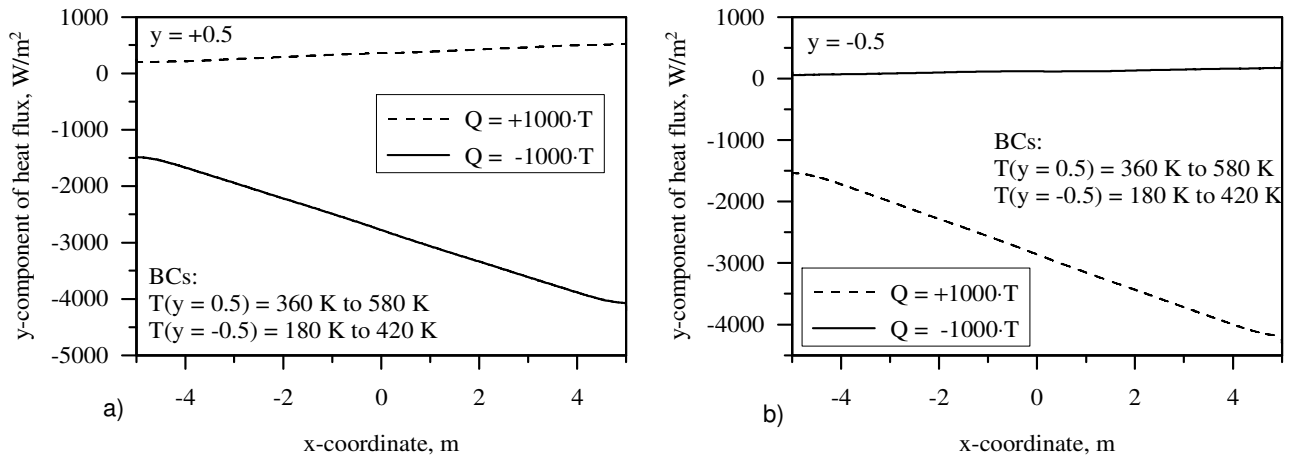


FIGURE 5: Distribution of y-components of heat flux on a) the upper interface b) the lower interface in a linear source -FEM

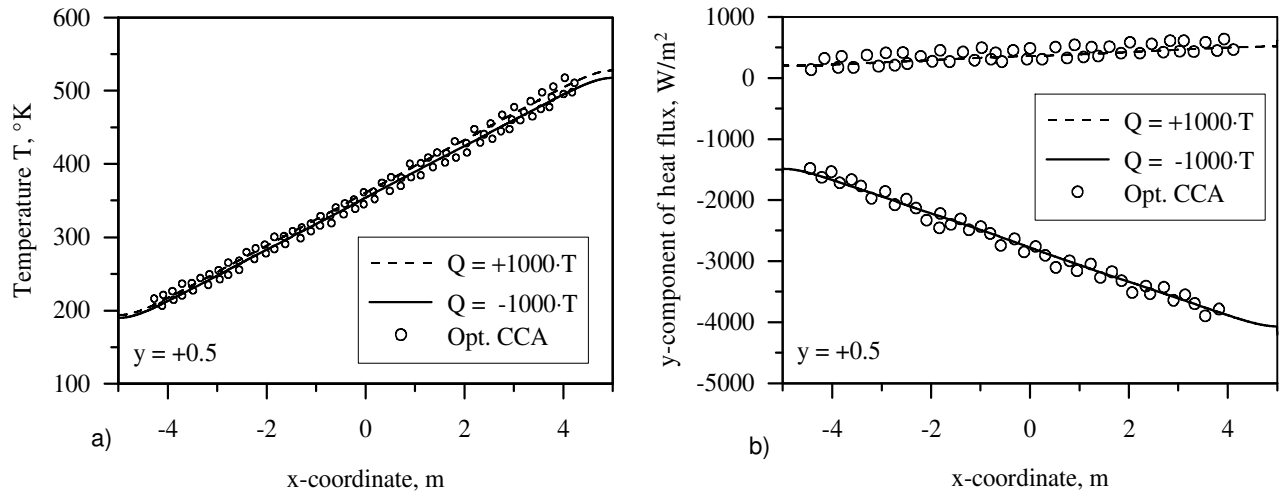


FIGURE 6: Optimizations results with CCA at a) the upper temperature, b) the upper y-component of heat flux on the intermediate layer

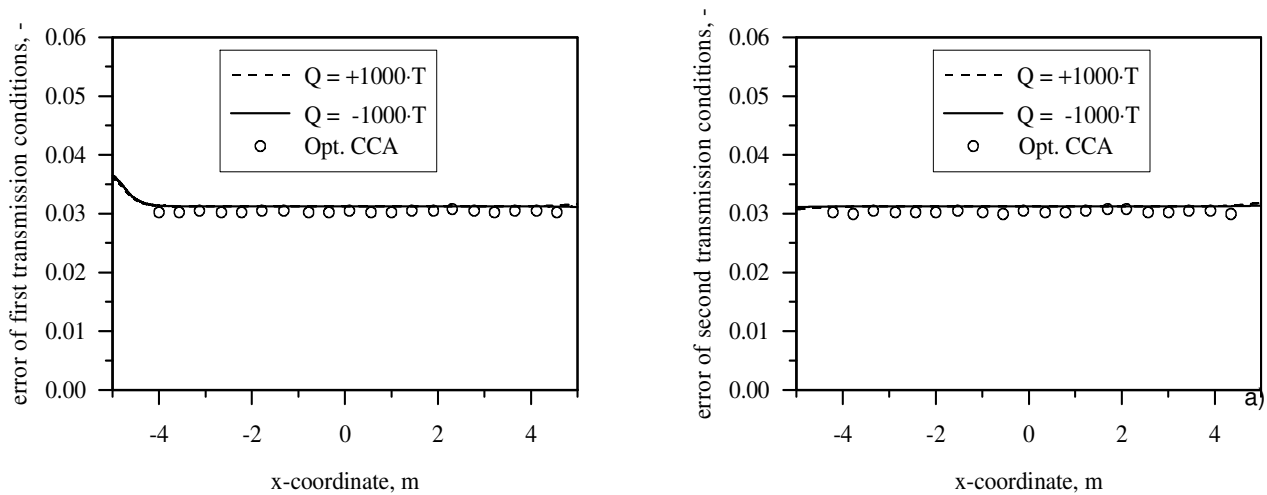


FIGURE 7: Transmission errors with CCA for a) error of first transmission condition, b) error of second transmission condition in a linear source

The optimal values of the temperature and the heat flux along the x -line at the upper interface are evaluated. They are illustrated by circle markers in Fig. 6. In Figure 7, the solid lines represent the verification of transmission conditions (1st and 2nd TC) by independently extracting the right (RHS) and left hand side (LHS) of Equations (5, 7 and 9) from FEM evaluation. The value of the error of transmission condition was obtained by calculating the difference of the LHS and RHS and relating this difference to the RHS of the respective transmission condition. When optimization was implemented using colonial competitive algorithm (CCA) the value of the error of transmission condition is reduced and depicted by circle markers in Fig. 7.

When compared with finite element method, it can be seen that the colonial competitive algorithm (CCA) has improved the accuracy of transmission condition in the thin adhesive layers for heat-conduction problems.

6. CONCLUSION

It has been shown in this work that the new optimization based on colonial competitive algorithm (CCA) is able to reproduce the same results at the classical approach which is based on the finite element method. The comparison shows that the excellent prediction by CCA makes it a viable tool for optimizing heat-conducting problems on adhesive layers. Future works would include analysis and simulation of thin reactive interphase layers and optimization it based on genetic algorithm and colonial competitive algorithm.

7. REFERENCES

1. F. Rosseli, P. Carbutt: *Sampe J.* 37:7, 2001
2. G. Mishuris, W. Mishuris and A. Öchsner: *Mater. Sci. Forum*, 533:87, 2007
3. G. Mishuris, W. Mishuris and A. Öchsner: *Mater. Sci. Forum*, Vol. 533:93, 2007
4. Öchsner, W. Mishuris: *Defect Diffus. Forum*, 273-276:400, 2008
5. G. Mishuris, W. Mishuris and A. Öchsner: *Defect Diffus. Forum*, 283-286:521, 2009
6. H. Mozafari, A. Öchsner: "*World Science and engineering*". 65-64:376-381, 2010
7. H. Mozafari, A. Öchsner, Amran Ayob. *Int. J. Sic. Eng.* 2-9:4495-4501, 2010
8. H. Sarimveis, A. Nikolakopoulos. "*Computers & Operations Research*". 32(6):1499–1514, 2005
9. H. Mühlenbein, M. Schomisch, J. Born. *Proc. Int. Conf. Genetic Algorithms*, University of California, San diego, 1991
10. E. Atashpaz, C. Lucas. "*Imperialist competitive algorithm: an algorithm for optimization inspired by imperialistic competition*". In: *IEEE Conf. CEC*; 2007.
11. R. Rajabioun, F. Hashemzadeh, E. atashpaz-Gargari, B. Mesgari, and F. R. Salmas i. "*17th IFAC World congress*". Seoul, Korea, 2008
12. E. Atashpaz-Gargari, F. Hashemzadeh, C. Lucas. 1-3:337-355, 2008
13. Biabangard-Oskouyi , E. Atashpaz, N. Soltani, C. Lucas. "*Int. J. Eng. Simulation*". 2008
14. Khhabbazi, E. atashpaz, C. Lucas. "*Int. J. Bio-Inspired computation*". 1:125-133, 2009
15. R. Rajabioun, E. Atashpaz, C. Lucas. "*Lecture notes in computer science*". Springer Berlin. 5073:680-695, 2008
16. E. Atashpaz, F. Hashemzadeh, R. Rajabioun, C. Lucas. *Int. J. Computing and Cybernetics*,1(3): 337–355, 2008
17. R. Rajabioun, E. Atashpaz, C. Lucas. "*Intl. conf. Com. Sci*". Part II: 2008

On the Analysis of the Laminar to Turbulent Flow Patterns in the Treatment of a Patient Receiving Oxygen

Navarun Gupta

*Department of Electrical Engineering
University of Bridgeport
Bridgeport CT USA 06604*

navarung@bridgeport.edu

Lawrence Hmurcik

*Department of Electrical Engineering
University of Bridgeport
Bridgeport CT USA 06604*

hmurcik@bridgeport.edu

Manan Joshi

*Department of Electrical Engineering
University of Bridgeport
Bridgeport CT USA 06604*

mjoshi@bridgeport.edu

Bhushan Dharmadhikari

*Department of Electrical Engineering
University of Bridgeport
Bridgeport CT USA 06604*

bdharmad@bridgeport.edu

Abstract

For a fluid, the transition from laminar to turbulent flow is a function of the fluid's speed, direction, applied pressure, pipe length, pipe radius, fluid viscosity, and fluid density. For human breathing, all of these parameters are generally beyond control, except for the fluid's density and viscosity. If the human has trouble breathing, laminar flow is preferred since the person does less work for each breath. In our analysis, the pipe is the airway (or breathing tube) from lips to bifurcation; the throat/pipe radius is known or can be determined; the differential pressure is the excess pressure above or below atmospheric pressure; fluid flow rate is the person's tidal lung volume divided by the breathing rate. We analyze 13 widely different humans (with differing values for throat length, radius, etc.) to see the effect of breathing two different fluids: air (20% oxygen, 80% nitrogen) and HeOx (20% oxygen, 80% helium). The onset of turbulent flow occurs for the critical radius, and this is calculated for each patient. For 12 patients, the critical radius is much smaller than the throat/tube radius, if HeOx is used--the flow is laminar. For all patients breathing air, the critical radius is larger than the throat/tube radius--the flow is turbulent. Thus, HeOx is shown to be superior in treating patients with breathing problems.

Keywords: Laminar, Turbulent, Viscosity, HeOx, Endotracheal.

1. INTRODUCTION

The focus of this paper is to derive the critical radius r_c , where r_c is the radius of the pipe (throat) such that laminar flow and turbulent flow are of equal intensity. To put this another way, r_c defines the boundary between turbulent and laminar flow. When radius $< r_c$, the flow is turbulent. If the radius exceeds r_c , the flow becomes laminar.

The governing equation for fluid flow in a pipe is [1 - 5]

$$\Delta P = \frac{8\eta LF}{\pi r^4} + \frac{16L\rho F^2}{10^4 R_e \pi^2 r^5} \quad (1)$$

Where the first term describes laminar fluid flow and the second term describes turbulent flow. Equation (1) is a form of Rohrer's equation [3], with values of radius r set at the point where the laminar and turbulent flows are equal. If we ignore the second term, then equation (1) becomes Ohm's law, and all fluid flow is laminar. In Ohm's Law, an electromotive force (voltage) causes a flow of current through a resistor; the length and area of the resistor factor in to the value of the resistance. In (1) a mechanical force (the change in pressure above or below the atmospheric value (expressed in Pascals)) produces a current or flow F (cm^3/sec) multiplied by the resistance. The resistance is proportional to η the viscosity (Pascal.second), the pipe length L (cm), and inversely proportional to the pipe radius r (cm). The viscosity has a value of 18.3 (air), 20.3 (oxygen), 19.4 (helium), and 19.6 (HeOx), in units of micropascal.seconds. L is approximately 20 to 23 cm in length for an adult. Whether the patient is intubated or not, this value remains the same. However, the value of r is either the radius of the ETT (endotracheal tube) used to intubate or the average radius of the airway. ETT's are 7 to 8.5 mm, inner diameter. Patient's airways are larger, and they vary according to the age, sex, weight, height, and health of the patient. See references [6, 7] for assorted data on various types of patients. The data that we quote in this paper comes from specific patient medical records. NOTE: all medical records quoted here are purged of any specific patient identification.

Equation 1 is true for any radius of pipe, if we ignore the second (i.e. turbulent) term. Equation 1 is true for both terms, if the radius is equal to the critical radius (r_c) or close to the value of the critical radius, i.e. the radius where term # 1 equals term # 2. The reason for this limited range of applicability is due to the fact that the nonlinear regime for fluid flow is complex and requires a power series expansion in the variable F (fluid flow) to fully quantify all effects that can occur. Our concept of turbulent flow (as limited to its use in this paper) is to describe one stage of complexity greater than simple laminar flow. Turbulent flow is governed by F raised to the second power; the Reynolds number is fixed at 2000. As the flow increase still further, the turbulence must be described by F raised to the third power, and later the forth, etc. Since it is not our purpose to dwell on all of the mathematics governing the flow process, we refer to Figures 1 and 2. Normal stream lines represent laminar flow. Erratic streamlines represent turbulence. Turbulent flow increases with increasing velocity and with bends and twists in the pipe.



FIGURE 1: Velocity profiles for laminar and turbulent flow in circular pipes [1].

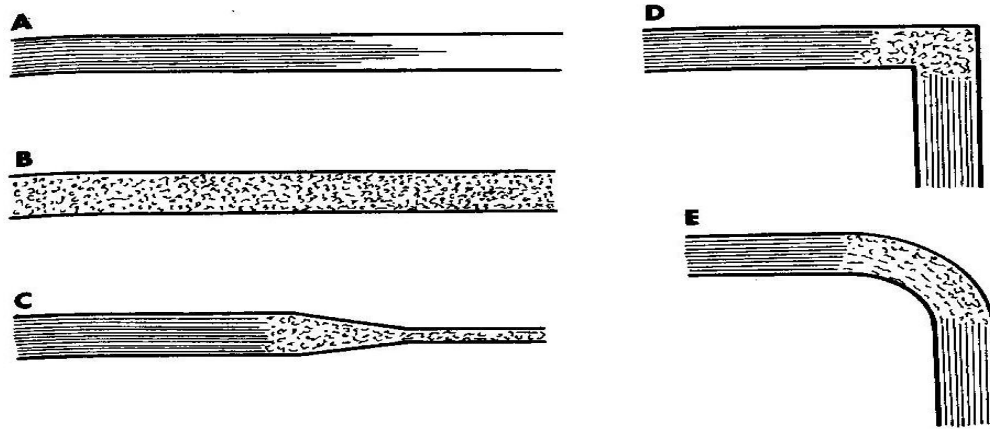


FIGURE 2: Laminar flow (A) versus turbulent flow (B) is shown by normal straight streamlines versus short erratic lines. (C) As a pipe's radius decreases the fluid's velocity increases, and the fluid changes from laminar to turbulent. For sharp bends (D) and even for gradual bends (E) in the pipe, the laminar flow becomes turbulent, even if it is only a local effect. This figure is adapted from Reference 8.

The pipe length is the distance from lips to bifurcation. Please note: in some hospital settings, an endotracheal tube is inserted into the patient's mouth. The distance from lips to bifurcation is generally 20 to 24 cm (depending on the patient and assuming the patient is an adult). However, the tube can be inserted to a greater length (at least 4 cm longer) if it diverts to only one lung. This practice is not recommended, however, since it is inefficient for a person with 2 functioning lungs. It is only used for patients in whom one lung is missing or defective to the extent that the oxygen best serves the patient's other lung.

It is well known in electricity that Ohm's Law breaks down if we approach the saturation current of the conductor. This is never seen for normal conductors like copper. The reason is that the saturation current for a normal sized copper wire is over a billion amps [9]. It takes only several hundred amps to vaporize a copper wire. Therefore, it is impossible to obtain the saturation current. By contrast, consider a semiconductor. Since the conductivity is orders of magnitude lower than copper or metal, the saturation current is much lower. Consider the conduction channel in a JFET (junction field effect transistor). With no gate voltage applied, the channel current (called the source current) will saturate if the drain-source voltage is made too large. The value of this current is of the order of milliamps.

Just as a large increase in applied voltage pushes current to saturate, a large pressure difference causes fluid flow to saturate. The region between linear (laminar) and saturation flow is a transition state, which we know as turbulent flow. Complete turbulence leads to chaos and the fluid flow is a fixed value, no matter how high the pressure. Less turbulence leads to a relationship which is quantified as the second term in equation (1).

Term # 2 in (1) shows that the pressure difference varies as the square of the flow rate. Re is the Reynolds number, and for the transition value between the laminar/turbulent flow in a pipe, $Re = 2000$ [5]. Density ρ is in units of (kg/m^3) , with the pressure still in Pascals. If we set the first and second terms in (1) equal, we can come up with the critical radius (r_c), i.e. the radius where 50% of the flow is Laminar and 50% turbulent.

Here is the approach we will take with the sick human being, i.e. patient. Ambient pressure is the atmospheric pressure (1.01×10^5 Pascals). During normal human breathing, a human will exert a pressure difference to inhale (inspiration) or exhale (expiration) air. The value of this extra pressure can be positive or negative and it typically varies from a value of zero to 30 Pascals. TV is the tidal volume (in cm^3), i.e. the extra volume of the lungs as they expand to take in the fresh air. The time for inspiration and expiration is not the same; generally it takes twice as long to expire a breath than it did to inspire it [10]. As an example, if a person breathes at the rate of 20 breaths per minute, it takes 3 seconds to complete a

breath, with one second spent on inspiration and 2 spent on expiration. Since the flow rate equals the tidal volume divided by time, the flow is larger for inspiration. To put this another way, there is more likelihood of a patient having breathing trouble during inspiration, since the flow rate is twice as large. In this paper, we will use the time of inspiration to focus on laminar vs. turbulent flow with the idea that whatever our results for inspiration, our results for expiration will be better, i.e. more likely laminar, since the flow rate is cut to one half. One other thing to be noted is patients with COPD (chronic obstructive pulmonary disease). Their expiration time is longer than normal. Hence, the inspiration time once again becomes the more sensitive parameter in determining breathing problems.

Our focus is to show that the HeOx solution is easier to breathe than regular air [11, 12]. The change in pressure is fixed. If the patient is on a ventilator or breathing on his own, then the change in pressure above below atmospheric pressure is fixed for a given person. The length and radius of the patient are also fixed and depend on the patient’s airway or ETT.

Our analysis proceeds in this fashion: set term # 1 and term #2 equal to each other. This assumes that laminar and turbulent flows are equal. The length and all other parameters are fixed, and we compute the radius, i.e. the critical radius (r_c). We actually compute 2 values for the critical radius, one for HeOx and one for air. Then compare this to the radius of the patient’s throat or ETT.

Table I lists the critical radius (r_c) for air and HeOx as well as the radius of the person’s throat or ETT. This data comes from the personal medical files in a hospital with the patient’s ID removed. In all cases, HeOx is better than air, i.e. in all cases the air flow remains more like a laminar than a turbulent flow.

Patient description	#1 Radius parameters for a patient's throat or ETT (cm)	#2 Critical radius (r_c) using air (cm)	#3 Critical radius (r_c) using HeOx (cm)	#4 Flow as tidal volume divided by inspiration time ($\text{cm}^3/\text{seconds}$)
18 year-old female, 110 pounds, Caucasian 4'9", ETT-L= 21 cm, no past medical history	0.375	0.94	0.31	500/1
39 year-old male, 205 pounds, Caucasian, 6'2", no ETT, L = 22 cm, healthy	0.5 to 0.6	0.83	0.27	800/2
52 year-old male, 176 pounds, Italian, 5'8", Tachycardia (rapid heart rate) and breathless, no ETT, L = 30 cm	0.40	0.72	0.22	560/1.7
60 year-old female, 154 pounds, Hispanic, after Coronary Artery graft bypass, L=22 cm, no ETT	0.37 to 0.45	1.47	0.45	700/1
20 year-old female, 132 pounds, Black, ETT-L = 22 cm, following minor surgery	0.375	0.63	0.33	600/2

56 year-old female, 132 pounds, Hispanic, ETT-L = 22 cm, smoker and COPD	0.36	0.63	0.19	600/2
25 year-old female, 125 pounds, Caucasian, Pregnant, ETT-L = 21 cm	0.36	0.77	0.24	550/1.5
45 year-old male, 180 pounds, Caucasian, in remission for cancer – underwent right lung lobectomy to remove 30% of right lung, emphysema, takes shallow breaths at rapid rate on ventilator and requires higher lung volumes as bullae from on eroding alveoli, ETT-L = 22 cm	0.40	0.96	0.30	550/1.5
61 year-old male, 154 pounds, Caucasian, following coronary artery bypass, ETT-L = 22 cm	0.40	0.47	0.14	600/1.5
27 year-old female, 132 pounds, Hispanic, undergoes lymph node breast biopsy, no past medical history and no illness, ETT-L = 23 cm	0.375	0.48	0.15	450/2
30 year-old male, 154 pounds, Causian, 5'9", following an asthma attack but not 0.57 intubated, L = 12.7 cm; Note: normal flow is 500/1, but this is reduced to 300 to 1 to include effects of asthma	0.54 to 0.57	0.60	0.20	300/1
68 year-old male, 154 pounds, 5'6", mixed Asian, chronic lung disease/emphysema, decreased lung capacity, ETT-L = 22 cm	0.40	0.53	0.16	250/1

TABLE 1: Measured throat radius (or ETT radius), critical radius, and flow rate are cited for 13 patients.

2. CONCLUSION

There are several conclusions that we can obtain from this work. First and most important, the mixture of oxygen and helium produces a substitute for air that is laminar, even under the most adverse conditions. Normal, healthy people can breathe air in a fashion that is turbulent. Every sharp twist and turn between the lips, throat, and bifurcation can cause simple, laminar flow to go turbulent. Rapid breathing also

increases the probability of turbulent flow. All of these conditions are of no significance in a healthy person. But for a sick person with breath difficulty or even for a healthy person who has undergone surgery and is intubated, the process of breathing laminar is very important. The ETT itself is generally free from sharp bends and kinks which promote turbulent flow. In addition, the HeOx mixture lowers the critical radius (r_c) for the onset of turbulent flow by over 300 % (or a factor of more than 3). See Table I.

A second thing to be noted from Table I is that sometimes the radius of the airway is a variable, due to the lack of simple smoothness of the throat. Even if the person is intubated, the ETT may not have the value of radius for which it is listed. For example, an ETT with inner diameter of 8 mm has a radius of 0.4 cm. However, often the sick patient produces secretions which compromise this value so that the actual value of the tube's radius is lower by up to 20% [13, 14, 15]. But even in this case, the HeOx mixture proves up to the task of maintaining laminar flow.

A third thing to be noted from our data is that there is nothing significant about the race or sex or age of the patient. All persons studied were adults. If children and infants were included, there would, of course, be a profound effect. But neither race nor sex nor age played a role in our overall analysis. Rather, the patient's size and medical history were the determining factors in our analysis. Granted, an older patient who smokes is more likely to have a long medical history than a younger person who smokes. In that sense, age is a strong factor. But the old and the young patient can have the same results if their medical history and size are the same.

It should be noted that our mathematical analysis of the data in Table I shows HeOx to be better than air in 12 of 13 cases, but in practice, all 13 patients improved their comfort with HeOx, i.e. they breathed easier.

3. ACKNOWLEDGEMENT

We wish to thank the students in the nurse-anesthetist program at Bridgeport Hospital for their help. We wish to thank Catherine Hmurcik BSN of the West Haven VA Hospital for useful discussions.

4. REFERENCES

1. J. Duffin, "*Physics for Anesthetists*", Charles C. Thomas, Springfield, IL, ISBN 0-398-06906-9, Ch. 10, p 160-171 (1976).
2. P. Davis and G. Kenny, "*Basic Physics Measurements in Anesthesia*", 5th ed., Butterworth-Heinemann, NY, ISBN 0-7506-4828-7, Ch. 2, p 12-17, (2003).
3. J. Guttmann, L. Ebenhard, B. Fabry, W. Bertschmann, G. Wolff, "*Continuous calculation of intratracheal pressure in tracheally intubated patients*", *Anesthesiology*,79(3): 503-513 (1993).
4. W. Hughes and J. Brighton, "*Fluid Dynamics, Schaum's Outline Series*", McGraw-Hill, Ch. 5, p 76-88 and Ch. 12, p 235-238 (1967).
5. L. McIntosh, "*Essentials of Nurse Anesthesia*", McGraw-Hill, Ch. 2, p 31-32 (1997).
6. R. Venn, "*Ventilation with lower tidal volumes as compared with traditional tidal volumes for acute lung injury and the acute respiratory distress syndrome (ARDS)*", *New England Journal of Medicine*, 342: 1301-1308 (2000).
7. J. West, "*Respiratory Physiology*," 7th ed., Lippincott, Williams, and Wilkins, Philadelphia, ISBN 13-978-0-7817-5152-0 (2005).
8. J. Dorsch and S. Dorsch, "*Understanding Anesthesia Equipment*," 4th ed., Williams and Wilkins, ISBN 0-683-30487-9, Ch. 6, p 185 (1999).

9. G. Neudeck and R. Pierret, " *Field Effect Devices, Modular Series on Solid State Devices*", 6, 2nd ed., Addison-Wesley, Ch. 6, p 194-195 (1990).
10. N. Petrucci and W. Iacovelli, " *Ventilation with smaller tidal volumes: a quantitative systematic review of randomized controlled trials*", International Anesthesia Research Society, 99:193-200 (2004).
11. J. Chevrolet, " *Helium and mixtures with oxygen in the intensive care unit*", Critical Care, 5:179-181(2001).
12. J. Chevrolet, " *Helium and mixtures with oxygen in the intensive care unit,*" Critical Care, 5: 179-181(2001).
13. N. Yahagi, K. Kumon, H. Tanigami, Y. Watanabe and J. Matsui, " *Helium/oxygen breathing Improved hypoxemia after cardiac surgery: case reports*", Anesthesia Analog, 80: 1042-1045 (1995).
14. J. Graf and J. Marini, " *Do airway secretions play an underappreciated role in acute respiratory distress syndrome (ARDS)*", Current Opinion in Critical Care. 14(1): 44-49 (2008).
15. V. Rangachari, I. Sundararajan, V. Sumathi, and K. Kumar, " *Laryngeal sequelae following prolonged intubation: a prospective study*", Indian Journal of Critical Medicine, 10(3):171-175 (2006).
16. Y. Fujino, A. Uchiyama, T. Mashimo, and M. Nishamura, " *Spontaneously breathing lung model comparison of breathing between automatic tube compensation and pressure support*", Respiratory Care, 48, (1):38-45 (2003).

CALL FOR PAPERS

Journal: International Journal of Applied Sciences (IJAS)

Volume: 2 **Issue** 1

ISSN: 2180-1258

URL: <http://www.cscjournals.org/csc/description.php?JCode=IJAS>

About IJAS

International Journal of Applied Sciences (IJAS) is publishing articles in all areas of applied sciences. IJAS seeks to promote and disseminate knowledge in the applied sciences, natural and social sciences industrial research materials science and technology, energy technology and society including impacts on the environment, climate, security, and economy, environmental sciences, physics of the games, creativity and new product development, professional ethics, hydrology and water resources, wind energy. IJAS is an academic peer reviewed on-line international journal of broad appeal aimed at fast publication of cutting edge multidisciplinary research articles reporting on original research across the fields of pure and applied sciences.

To build its International reputation, we are disseminating the publication information through Google Books, Google Scholar, Directory of Open Access Journals (DOAJ), Open J Gate, ScientificCommons, Docstoc and many more. Our International Editors are working on establishing ISI listing and a good impact factor for IJAS.

IJAS List of Topics

The realm of International Journal of Applied Sciences (IJAS) extends, but not limited, to the following:

- Agricultura
- Audio
- Automotive Engineering
- Biological
- Bombs
- Building officials
- Chemical
- Combat Engineering
- Cryogenics
- Domestic Educational Technologies
- Energy
- Engineering geology
- Entertainment
- Environmental Engineering Science
- Environmental technology
- Fire Protection Engineering
- Fishing
- Architectural
- Automotive
- Biochemical
- Biomedical
- Broadcast
- Ceramic
- Civil
- Construction
- Domestic appliances
- Domestic Technology
- Energy storage
- Enterprise
- Environmental
- Environmental Risk Assessment
- Financial Engineering
- Fisheries science
- Food

- Food Technology
- Health Safety
- Industrial Technology
- Machinery
- Marine Engineering
- Materials science and engineering
- Metallurgical
- Military Ammunition
- Military Technology and equipment
- Motor Vehicles
- Naval Engineering
- Nutrition
- Ontology
- Optics
- Pharmaceuticals
- Sanitary Engineering
- Textile
- Traffic
- Visual Technology
- Genetic
- Health Technologies
- Industry Business Informatics
- Manufacturing
- Material Sciences
- Medical Technology
- Microtechnology
- Military Technology
- Mining
- Music
- Nuclear technology
- Ocean
- Optical
- Particle physics
- Safety Engineering
- Space Technology
- Tissue
- Transport
- Zoography

IMPORTANT DATES

Volume: 2

Issue: 1

Paper Submission: January 31, 2010

Author Notification: March 01, 2011

Issue Publication: March April 2011

CALL FOR EDITORS/REVIEWERS

CSC Journals is in process of appointing Editorial Board Members for ***International Journal of Applied Sciences (IJAS)***. CSC Journals would like to invite interested candidates to join **IJAS** network of professionals/researchers for the positions of Editor-in-Chief, Associate Editor-in-Chief, Editorial Board Members and Reviewers.

The invitation encourages interested professionals to contribute into CSC research network by joining as a part of editorial board members and reviewers for scientific peer-reviewed journals. All journals use an online, electronic submission process. The Editor is responsible for the timely and substantive output of the journal, including the solicitation of manuscripts, supervision of the peer review process and the final selection of articles for publication. Responsibilities also include implementing the journal's editorial policies, maintaining high professional standards for published content, ensuring the integrity of the journal, guiding manuscripts through the review process, overseeing revisions, and planning special issues along with the editorial team.

A complete list of journals can be found at <http://www.cscjournals.org/csc/byjournal.php>. Interested candidates may apply for the following positions through <http://www.cscjournals.org/csc/login.php>.

Please remember that it is through the effort of volunteers such as yourself that CSC Journals continues to grow and flourish. Your help with reviewing the issues written by prospective authors would be very much appreciated.

Feel free to contact us at coordinator@cscjournals.org if you have any queries.

Contact Information

Computer Science Journals Sdn Bhd

M-3-19, Plaza Damas Sri Hartamas
50480, Kuala Lumpur MALAYSIA

Phone: +603 6207 1607
 +603 2782 6991
Fax: +603 6207 1697

BRANCH OFFICE 1

Suite 5.04 Level 5, 365 Little Collins Street,
MELBOURNE 3000, Victoria, AUSTRALIA

Fax: +613 8677 1132

BRANCH OFFICE 2

Office no. 8, Saad Arcad, DHA Main Bulevard
Lahore, PAKISTAN

EMAIL SUPPORT

Head CSC Press: coordinator@cscjournals.org
CSC Press: cscpress@cscjournals.org
Info: info@cscjournals.org

COMPUTER SCIENCE JOURNALS SDN BHD
M-3-19, PLAZA DAMAS
SRI HARTAMAS
50480, KUALA LUMPUR
MALAYSIA